



Sequential Station for Particulate Matter

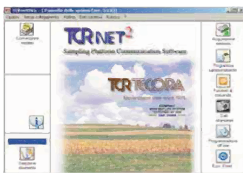
SKYPOST PM

MAIN CHARACTERISTICS

**Certified by TUV
in accordance with the
EN12341 and DM60 norms**

Main applications:

- Total particulate matter
- Fractions 10, 2.5, 1 micron (PM10, PM2.5, PM1)
- Heavy metals
- 16 filter capacity
- Electronic flow rate control
- Measuring sensors with the following parameters:
 - Atmospheric pressure
 - Pressure drop on filter
 - Ambient temperature
 - Dry gas meter temperature
- Volumetric measurement with dry gas meter within $\pm 2\%$ precision
- Sample conditioning signal for:
 - wind direction
 - external signal * (ex. rain)
- RS232 interface
- Built-in printer
- Remote control with dedicated software



Acquisition software and remote control



www.thomsongroup.com.au

Skypost PM is an automatic outdoor station for continuous atmospheric particulate monitoring by the sampling method on 47mm diameter filter membrane.

The sequential substitution system of the filtering membrane with 16 membrane capacity, unified with the electronic flow rate controller allows continuous, unattended operations.

The special realization of the filter substituting system, permits the replacement of the exposed filters **without interrupting the sampling**, therefore it is not necessary to intervene within a predetermined interval. It is produced in two versions with different flow rates.

The **Skypost PM** model is with up to 30 l/min flow rate capacity, and the **Skypost PM HV** model up to 50 l/min flow rate capacity.

The HV version is suitable for dust sampling, in particular with the LVS PM10 2.3 m³/h sampling head which is in accordance with the EN 12341 norm.

The modularity of the sampling head allows the use of USEPA 40 CFR Part 50 head as well. The straight route of the suction tube and the separation of the permanence zone of the filters from the internal or radiant source of heat, allows gaining and maintaining the integrity of the samples.

A ventilation system, and a differential thermoregulating heating system permits the instrument to operate even in the most extreme ambient conditions.



TECHNICAL CHARACTERISTICS

	SKYPOST PM	SKYPOST PM HV
Flow rate range	8 - 30 l/min	10 - 50 l/min
Pump Type	Rotary vane 3 m ³ /h	Rotary vane 6 m ³ /h
Power supply	220 V 50 Hz	220 V 50 Hz
Dimensions mm	450 x 510 x 610 mm (b x b x h)	450 x 510 x 610 mm (b x b x h)
Weight kg	38 kg	42 kg
P/N of article	AA99-014-0020SP	AA99-014-0030SP
P/N of GSM modem for remote control	AA99-014-9910SP	AA99-014-9910SP
Roof crossing kit	AA99-013-9906SP	AA99-013-9906SP

* *Facultative options*



+39 02 3664 8635



www.tcrtecora.com



info@tcrtecora.com



Via delle Primule, 16
Cogliate (MB), 20815, Italy

