

Met Master Pro 1000

METEOROLOGICAL DATA LOGGER

Met Master Pro 1000 Series

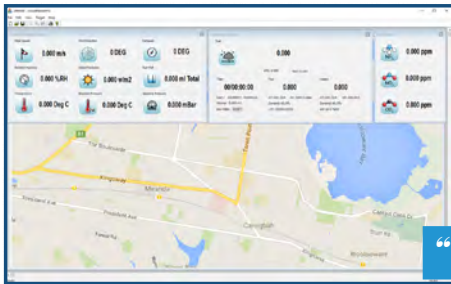
The Met Master Pro 1000 (MMP1000) is a data logger designed specifically for meteorological applications. The MMP1000 is a user friendly and reliable option for your meteorological monitoring.

On-site programming and set up is made easy with the built in screen/keypad and intuitive menu. Now you can just as easily adjust instrument settings, view live data and download in CSV format remotely with Visual Master Pro Software.

The MMP1000 works seamlessly together with Lufft's German engineered Smart Weather Sensors to allow you to measure a wide range of parameters.

Visual Master Pro Software

VMP is a revolutionary remote interface, empowering non-technical users to access data and adjust instrument settings at an advanced level. This easy to operate platform delivers efficiency, peace of mind and real-time decision making with features including; live data viewing, data download and complete system and settings control. VMP sets a new standard for industry interfaces. View the VMP brochure to find out more.



“The new standard for industry interfaces.”

Key Features:

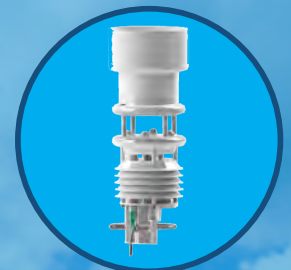
- Manufactured in Australia
- Accurate real-time meteorological readings
- User friendly and reliable
- Keypad on site
- Push or Poll Data
- Variable Averages
- Provides CSV Data Results
- Two Programmable Relays for Process Control or Alarms/ Alerts
- Doubled Memory (New!)
- Visual Master Pro Remote Interface (New!)
- Mains, Battery or Solar Power
- Available for purchase or rent!



Lufft Weather Sensors

For reliable operation year after year, TES offer only the highest quality weather sensors from *Lufft*. Lufft is a world leading climate and environmental sensor manufacturer whose quality of equipment has awarded them *German Brand of the Century* in 2013. With over 20 different sensors in the range, there is a sensor suitable for your required parameters and budget. And with no moving parts, they're maintenance free!

Wind Speed, Wind Direction, Temperature, Relative Humidity, Air Pressure, Solar Radiation, Precipitation, Lightning Detection and more!



Met Master Pro 1000

METEOROLOGICAL DATA LOGGER



Complete Weather Stations

Thomson Environmental Systems will create a custom weather station solution to meet your meteorological monitoring requirements. With a combination of any of the following options, TES will deliver a tailor-made low maintenance solution that will last year after year;

- Australian Standards Compliance
- MMP1000 Data Logger + Visual Master Pro Software
- Lufft Weather Sensors
- Mains, Battery or Solar Power
- 2m Tripod, 10m Mast, Custom Mast
- Two Relays for Process Control or Alerts (SMS, Visual or Audio)
- Remote Access via 3G

Met Master Pro 1000 Specifications

Meteorological Inputs

Multiple channels including wind speed, wind direction, humidity, temperature, precipitation, barometric pressure, solar radiation, evaporation, sigma theta, lightning & more.

Relay Contacts

3 relay contacts (NC/COM/NO), Alarm 1 set point, Alarm 2 set point, Instrument fault alert Max. contact switching 5A

Communications

2 x RS232 digital ports, RS485/RS422 and analogue

Inputs

2 x RS232 or RS485, 2 x Analogue Inputs (0 to 5 volt or 4-20mA [jumper selectable]), 2 x Counter Channels, 2 x PT100 & SHT75X Inputs Included.

Outputs

3 x Analogue Outputs (0 to 5 volt or 4-20mA [jumper selectable]), 1 x RS232 or RS485 Output, Ethernet Module Optional, 3 x Solid State Relays for Audio and Visual Alarms

Digital Inputs

3 optically isolated inputs, voltage free

Data Download

Data is polled or, upon special request, automatically and continually pushed to your server.

Display Type

128 x 64 bit low energy graphical LCD display

Keypad / User Interface

12 button function with keys

Alarm Capabilities

3G / NEXTG SMS messaging to mobile phone, external siren, visual beacon and text

Internal Data Logging/Memory

Stores over 3 years of time and date stamped 10 minute data captures from a single channel. May vary if Met parameters are also being measured.

Data Logging Interval

Fully user adjustable from 5 to 999 seconds

Extended Data Logging

TES are happy to cooperate with other data logger suppliers to allow integration of our system into existing networks.

Power Options

Mains Power, Battery Power or Solar Power (all waterproof)

Power Requirements

Instrument draws only 150mA Mains Power - Operates from 80 to 260 VAC and is fully weatherproof.

Battery Power

Standard or Portable. Includes rechargeable battery, regulator and battery box. 'Standard Battery System' provides approx. 210 hours of operation. 'Portable Battery System' provides approx. 48 hours of operation.

Solar Power System provides continuous operation based on average of >4.5 hours of sunlight per day, and will continue for up to 3 days no sun. System includes Solar Panel & Stand, Battery & Battery box, Regulator

Enclosure Type

NEMA4 / IP66 rated

Mounting Options

TES Heavy Duty Tripod 2m 10m Mast (Pivotal) 10m Mast (Pump Up)

Weight

System 4.8Kg

Dimensions - System

(W)300mm
(D)200mm
(H)350mm

Operating Conditions

-10°C to 50°C temperature range
0 to 95% humidity range

Shipping Dimensions:

MMP1000:
W x 50, D x 40 , H x 30cm, 5kg
Tripod:

W x 16, D x 16 , H x 155cm
8kg

Lufft Sensor Mounting Arm:

W x 70, D x 21 , H x 10cm

3.5kg

Lufft Weather Sensor: (approx.)

W x 42, D x 27 , H x 22cm

3kg

QAMS by TES Master Pro Range

MMP1000 Series

MET MASTER PRO DATA LOGGERS

FMP5000 Series

LOW VOLUME FILTER SAMPLER

DMP6000 Series

REAL-TIME SINGLE CHANNEL MONITOR

DMP7000 Series

REAL-TIME FIVE CHANNEL PARTICLE COUNTER

HVMP

HIGH VOLUME AIR SAMPLER